

Visual Basic Assignment

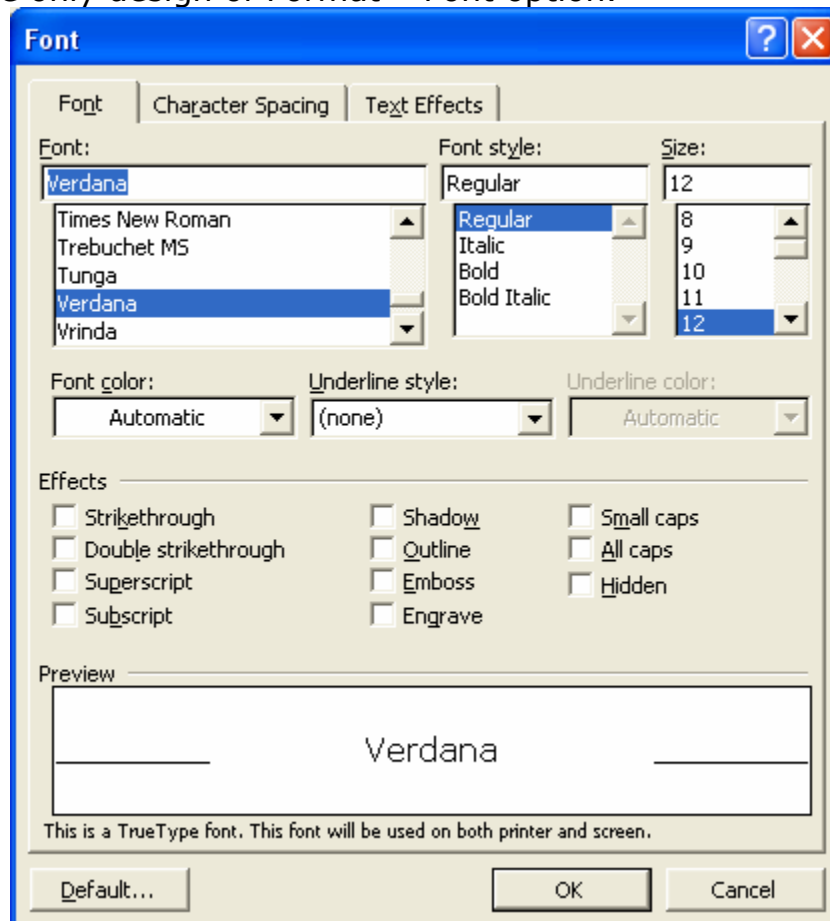
Q:- 1. Create a Login form design in VB.

Q:-2. Create a Password Change form design in VB.

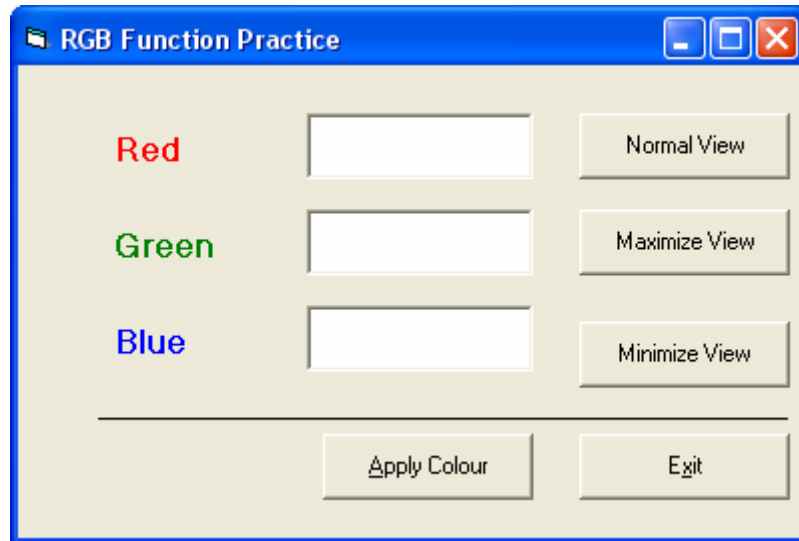
Q:-3. Create a design of Marks Entry form in VB.

Q:-4. Create an Admission form design in VB.

Q:-5. Create only design of Format – Font option.



Q:-6. Create following visual interface in VB.



Write code in appropriate button

- ⇒ Apply Color : To apply background color to form as per specified values of RGB.
- ⇒ Norma View : To display form in Norma view or same as design view.
- ⇒ Maximize View : To display form in Maximize view.
- ⇒ Minimize View : To display form in Minimize view at taskbar.

Q:-7. Draw a circle with different DrawStyle on form when user click anywhere on the Form object.

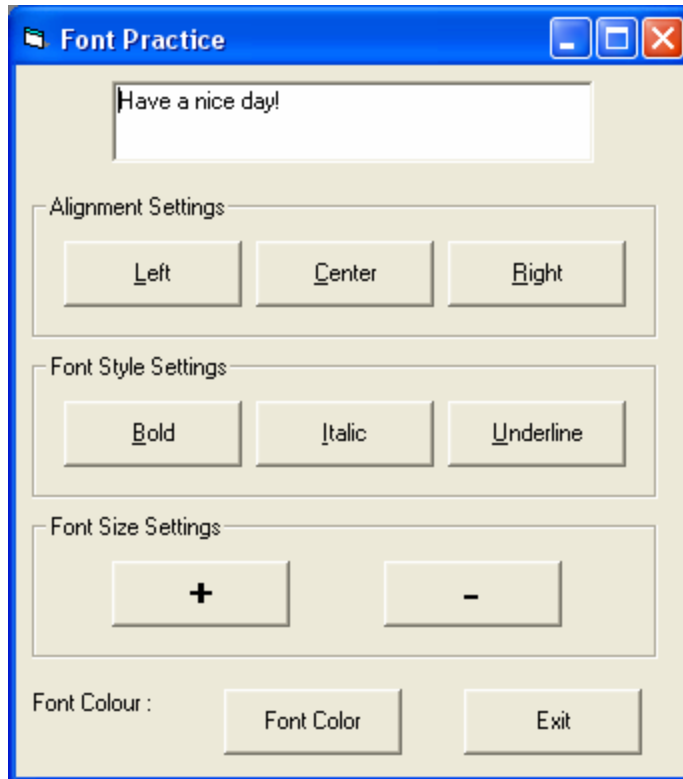
Q:- 8. To display different mouse pointer at Run time, when user Down the left button and release it on the Form object.

Q:-9. To change the random position of Form at Run time, when user Double click on form object.

Text Box control Practice

Q:-10. Create following visual interface in VB and apply setting.

(Create *Textbox Practice* Folder and save following form with frmFontPractice.frm)



**Q:- 11. Create a new VB project with following visual interface and apply specified settings.
(Give form Name : frmResultsheet and save it with same name in separate folder.)**

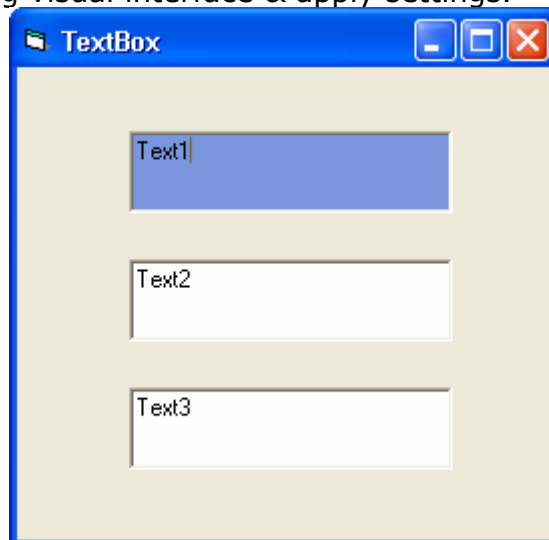
The screenshot shows a Windows-style application window titled "Result Sheet". The window has a blue title bar with standard minimize, maximize, and close buttons. The main area is a light beige color. It contains several input fields: "Roll No:" (a single-line text box), "Student's Name:" (a single-line text box), "Address:" (a multi-line text area with scrollbars), "City:" (a single-line text box), and "Mobile:" (a single-line text box). Below these is a section titled "Marks Entry" which contains a grid of input fields: "English:", "OOPs:", "VB:", "DFS:", "SAD:", "OS:", and "Practical:". To the right of the "English:" field are "Total:" and "Per (%):" fields. Below the "OOPs:" field is a "Class:" field. In the center of the "Marks Entry" section is a large "Calculate" button. To the right of the "Calculate" button are two smaller buttons: "Add" and "Exit".

- ✿ Apply following validation in above given form.
 - ⇒ Locked all the Text box at Design time and when user press Add button at Run time , unlock all the text box and convert its *Caption Add* with **Save**.
 - ⇒ After record entry , press **Save** button and Locked all the Text box & Change its *Caption* with **Add** button.

**Shree Swaminarayan College Of Computer Science, Sardarnagar , Bhavnagar
SYBCA - VB (203)**

- ⇒ Only Allows maximum numbers of digits in Rollno (7) , Mobile (10) , Marks entry text box (3).
- ⇒ Locked Total, Per & Class text box at Run time, so user can not enter data at Run time because they are calculated textbox.
- ⇒ User can insert only numbers in Rollno, mobile, All subjects marks.
- ⇒ User can insert only Alphabet in Name , City text box.
- ⇒ Press **Calculate** button for generating total , per and Class values.
- ⇒ Record entry is compulsory in all the Text Box. If user remain any text box blank then displays appropriate message during data entry.
- ⇒ Marks values should be entered between 0 and 100 otherwise display error message to the user for valid entry. If user enter invalid marks and lost the focus from text box then display error message & change back ground color of that text box with Red color.
- ⇒ When any Text box gets the focus , display its data with selection.
- ⇒ To set Tab Index property & specify Tool Tip Text on every Text box control.
- ⇒ To set Tab Stop property on Total , Per , Class text box for not getting focus.
- ⇒ To put a clear button on form to clear all the text boxes.

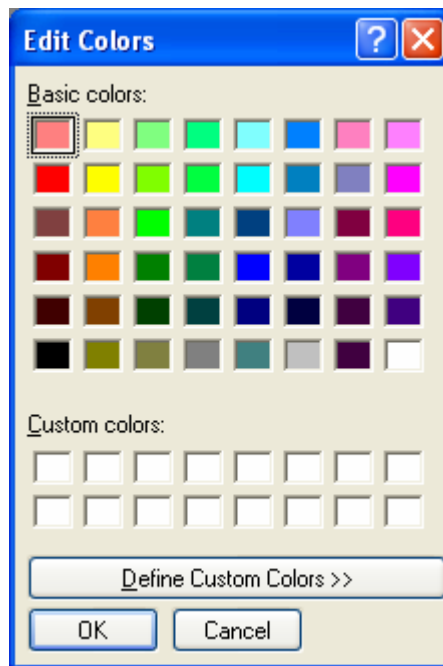
Q:-12. Create following visual interface & apply settings.



- ⇒ To move current TextBox when user press Arrow keys with Ctrl key.
- ⇒ To change size of current Text box when user press Arrow keys with shift key.
- ⇒ To change background color with yellow when any text box gets the focus and others textbox color display with default color.

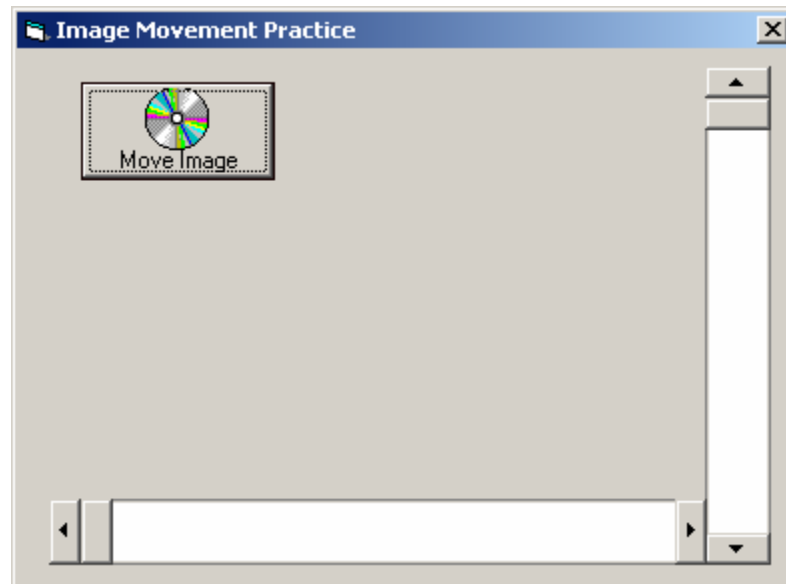
Label & Scrollbar Control Practice.

Q:-13. Create another form in Text Box practice project with visual interface of color palate.



- ⇒ To open this color palate when user click on Font Color button of Font practice form (Q : 10). When user select any color from color palate and press Ok then apply selected color to Text box font color given in Font Practice form.

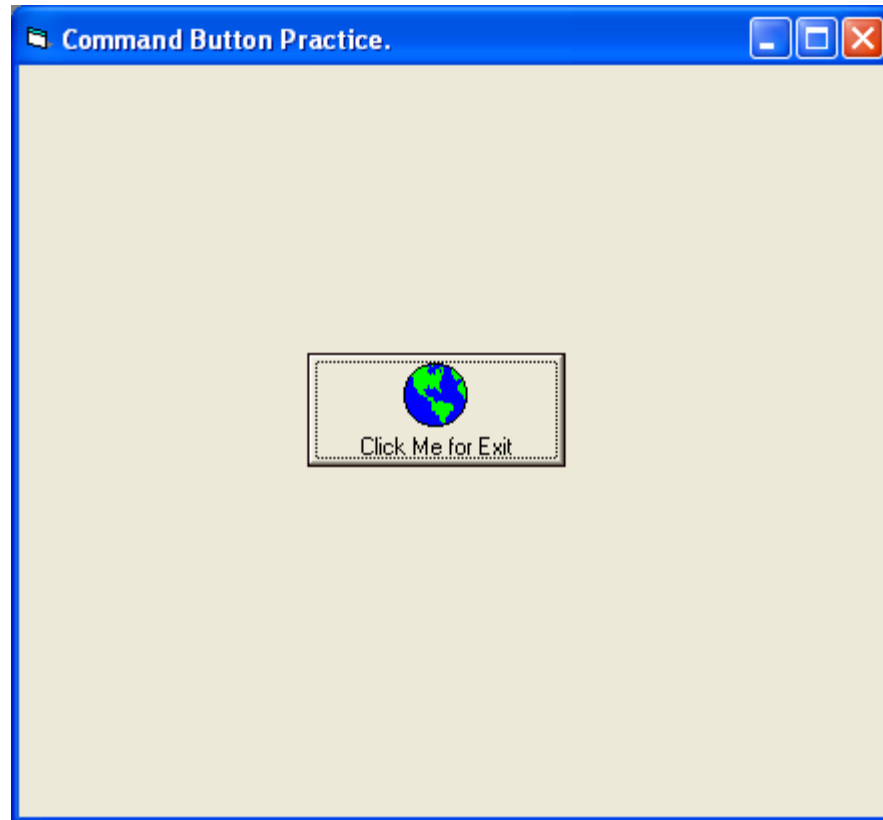
Q:-14 . Create the following visual interface using appropriate controls.



- ✿ Give the following facilities in a project.
 - ✿ Move image according to scrollbar change.
 - ✿ If users press Esc key then project should be closed.

Command Button Practice

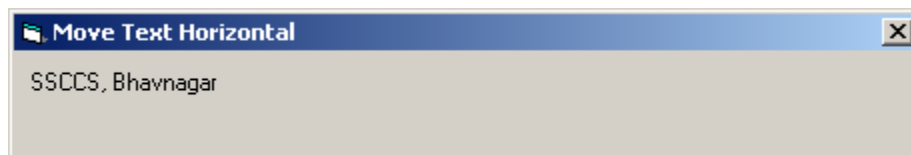
Q:-15. Create a new VB project with following visual interface in VB.



⇒ When user moves mouser pointer over the command button , it should be moved randomly on the screen.

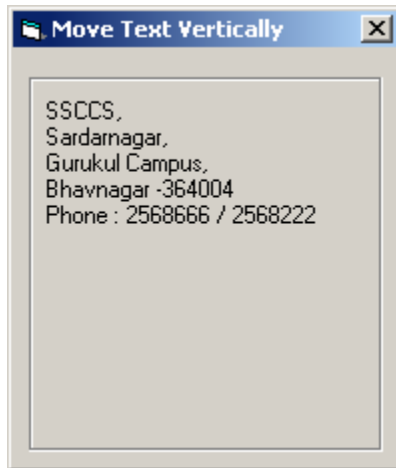
Frame & Timer Control practice

Q:-16. Scroll the following Text Horizontally (Left to Right And Right to Left)



**Shree Swaminarayan College Of Computer Science, Sardarnagar , Bhavnagar
SYBCA - VB (203)**

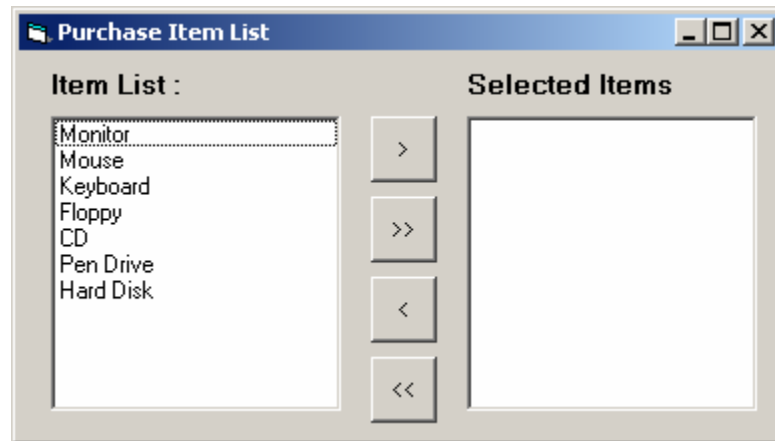
Q:-17. Scroll the following Text vertically (Top to Bottom And Bottom to Top)



Q:-18. Create following visual interface in VB.



Q:-19. Create a following visual interface in VB and gives specified facilities.



- ✿ Allow Multiple selection in a ItemList.
- ✿ If user click on First (>) Button then selected items should be moved from Item List to Selected Items box.
- ✿ If user click on Second (>>) button then all the items of First List box should be moved in the second list box.
- ✿ If user Click on Third (<) button then selected items of Second list box should be moved in the first list box.
- ✿ If user click on Fourth (<<) button then all the items of Second List box should be moved in the First list box.